

**Company Information: Shiva**

**Style #2 : Leggings**

**Date: September 2016**

Style #1: Cropped leggings

Patterns: Design #2 sewing pattern A0.pdf

Sample Size: Size S

Size Range: S, M, L

Fabric: polyamide/spandex

Our Proposed Price range for this style: (Specify FOB or CIF)

Manufacturer's Price Quote for producing this style: (Specify FOB and CIF)

| <b>Basic Specifications:</b> | <b>cm</b> | <b>Design Sketch</b> |
|------------------------------|-----------|----------------------|
|------------------------------|-----------|----------------------|

|  |      |
|--|------|
| 1 Waist width                          | 29.0 |
| 2 Hip width                            | 36.0 |
| 3 Hem width                            | 10.0 |
| 4 Total length                         | 94.0 |
| 5 Inseam length                        | 72.0 |
| 6 Waistband height (front)             | 9.5  |
| 7 Waistband height (back center)       | 9.5  |
| 8 Front croth seam length              | 14.0 |
| 9 Back croth seam length               | 13.0 |
| 10 Yoke height (back center)           | 6.0  |
| 11 Yoke width                          | 44.0 |
| 12 Side detail width (hip)             | 11.0 |
| 13 Side detail width (angle seam)      | 7.0  |
| 14 Side detail width (hem)             | 3.0  |
| 15 Side detail angle height (from hem) | 28.0 |
| 16 Yoke height (front seam)            | 3.0  |
| 17 Pocket height (from waistband)      | 11.0 |
| 18 Pocket width                        | 11.0 |
| 19 Pocket depth                        | 16.0 |

**(Manufacturer fills out this section)**

**Cost Analysis of this style:**

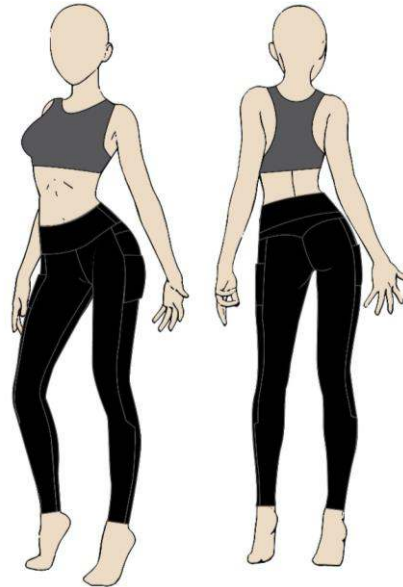
- Cut & Sew:
- Shell Fabric Cost:
- Secondary Fabric Cost (if needed):
- Trims Cost:
- Thread Cost:
- Lining Cost:
- Fabric Yardage:
- Thread Yardage:
- Embellishments Cost:
- Embroidery, Screenprinting Cost etc:
- Pressing Cost:
- Additional Processing Cost:
- Hangtags and Labeling Cost:
- Packaging Cost:

**Total FOB cost: 0.0**

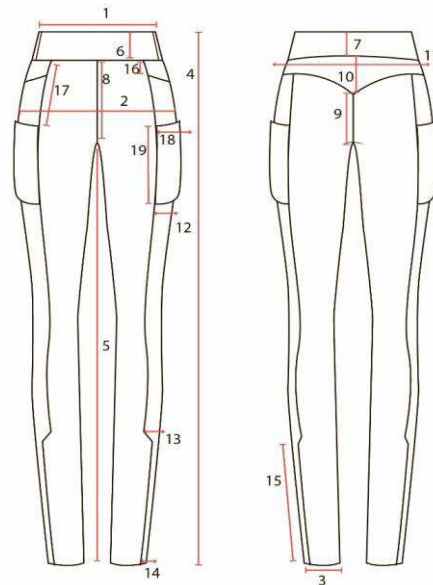
Figures based on order quantity of:

**Design Sketch**

Regular Sketch



Technical Sketch



**Fabric Swatch**

**Color Way**

Main: Black

**Company Information: Shiva****Style #2 : Leggings****Date: September 2016**

Style #1: Cropped leggings

Patterns: Design #2 sewing pattern A0.pdf

Sample Size: Size S

Size Range: S, M, L

Fabric: polyamide/spandex

|  |                                     | Current Spec | Manufacturer's | Adjusted |
|--|-------------------------------------|--------------|----------------|----------|
| TS   | <b>Detailed Specifications:</b>     | cm           | SAMPLE         | NEW SPEC |
| <b>Opening Notes and Instructions to manufacturer:</b>   |                                     |              |                |          |
| 1. All Measurements are net measurements unless stated otherwise   |                                     |              |                |          |
| 2. Please allow all necessary seam allowances to reach our net measurements  |                                     |              |                |          |
| 3. All measurements are flat   |                                     |              |                |          |
| <b>Body: (flat measurements)</b>   |                                     |              |                |          |
| 1  | Waist width                         | 29.0         |                |          |
| 2  | Hip width                           | 36.0         |                |          |
| 3  | Hem width                           | 10.0         |                |          |
| 4  | Total length                        | 94.0         |                |          |
| 5  | Inseam length                       | 72.0         |                |          |
| 6  | Waistband height (front)            | 9.5          |                |          |
| 7  | Waistband height (back center)      | 9.5          |                |          |
| 8  | Front croth seam length             | 14.0         |                |          |
| 9  | Back croth seam length              | 13.0         |                |          |
| 10   | Yoke height (back center)           | 6.0          |                |          |
| 11   | Yoke width                          | 44.0         |                |          |
| 12   | Side detail width (hip)             | 11.0         |                |          |
| 13   | Side detail width (angle seam)      | 7.0          |                |          |
| 14   | Side detail width (hem)             | 3.0          |                |          |
| 15   | Side detail angle height (from hem) | 28.0         |                |          |
| 16   | Yoke height (front seam)            | 3.0          |                |          |
| 17   | Pocket height (from waistband)      | 11.0         |                |          |
| 18   | Pocket width                        | 11.0         |                |          |
| 19   | Pocket depth                        | 16.0         |                |          |
| Stitching Method: Double Stitch on the bottom edge, Flatlock stitching for seam lines  |                                     |              |                |          |
| <b>TAGS, TRIMS AND LABELS: Identify and specify location</b>   |                                     |              |                |          |
| Main Woven Label Placement: Back, waistband seam   |                                     |              |                |          |
| Size label placement: Attached to the mai label  |                                     |              |                |          |
| Care Instructions Label / RN# on separate label to be located: Left side seam  |                                     |              |                |          |
| Hangtag to be located: Back top edge   |                                     |              |                |          |
| <b>FABRIC:</b>   |                                     |              |                |          |
| Main fabric: polyamide/spandex   |                                     |              |                |          |
| Thread: 100% Polyester   |                                     |              |                |          |
| <b>COLORS: color name and Pantone Reference</b>  |                                     |              |                |          |
| Fabric: Black  |                                     |              |                |          |
| <b>Packing Details:</b>  |                                     |              |                |          |
| Specify here how you want your style shipped to you. Focus on packaging materials, prepacks or individually packed and what should be printed on polybag, box, box weight etc. |                                     |              |                |          |
| <b>Quality Concerns:</b>   |                                     |              |                |          |
| (Give your quality concerns here and also ask the manufacturer what are their concerns about   |                                     |              |                |          |

**Company Information: Shiva****Style #2 : Leggings****Date: September 2016**

Style #1: Cropped leggings

Patterns: Design #2 sewing pattern A0.pdf

Sample Size: Size S

Size Range: S, M, L

Fabric: polyamide/spandex

**Grading Chart**

| SIZES                                  | + / -<br>Rule | P1  | P1   | P2   |       |
|--|---------------|-----|------|------|-------|
|  |               | S   | M    | L    |       |
| 1 Waist width                          | 29.0          | 3.0 | 29.0 | 32.0 | 35.0  |
| 2 Hip width                            | 36.0          | 3.0 | 36.0 | 39.0 | 42.0  |
| 3 Hem width                            | 10.0          | 3.0 | 10.0 | 13.0 | 16.0  |
| 4 Total length                         | 94.0          | 4.5 | 94.0 | 98.5 | 103.0 |
| 5 Inseam length                        | 72.0          | 1.5 | 72.0 | 73.5 | 75.0  |
| 6 Waistband height (front)             | 9.5           | 1.5 | 9.5  | 11.0 | 12.5  |
| 7 Waistband height (back center)       | 9.5           | 1.5 | 9.5  | 11.0 | 12.5  |
| 8 Front croth seam length              | 14.0          | 1.5 | 14.0 | 15.5 | 17.0  |
| 9 Back croth seam length               | 13.0          | 1.5 | 13.0 | 14.5 | 16.0  |
| 10 Yoke height (back center)           | 6.0           | 1.5 | 6.0  | 7.5  | 9.0   |
| 11 Yoke width                          | 44.0          | 3.0 | 44.0 | 47.0 | 50.0  |
| 12 Side detail width (hip)             | 11.0          | 1.5 | 11.0 | 12.5 | 14.0  |
| 13 Side detail width (angle seam)      | 7.0           | 1.5 | 7.0  | 8.5  | 10.0  |
| 14 Side detail width (hem)             | 3.0           | 1.5 | 3.0  | 4.5  | 6.0   |
| 15 Side detail angle height (from hem) | 28.0          | 1.5 | 28.0 | 29.5 | 31.0  |
| 16 Yoke height (front seam)            | 3.0           | 1.5 | 3.0  | 4.5  | 6.0   |
| 17 Pocket height (from waistband)      | 11.0          | 0.0 | 11.0 | 11.0 | 11.0  |
| 18 Pocket width                        | 11.0          | 1.5 | 11.0 | 12.5 | 14.0  |
| 19 Pocket depth                        | 16.0          | 0.0 | 16.0 | 16.0 | 16.0  |

All measurements are flat